

Power Amplifier Module

Product Features

- Frequency: 110-150GHz
- Small signal gain: 18dB
- Psat: 15dBm
- DC power supply



Electrical Specs:

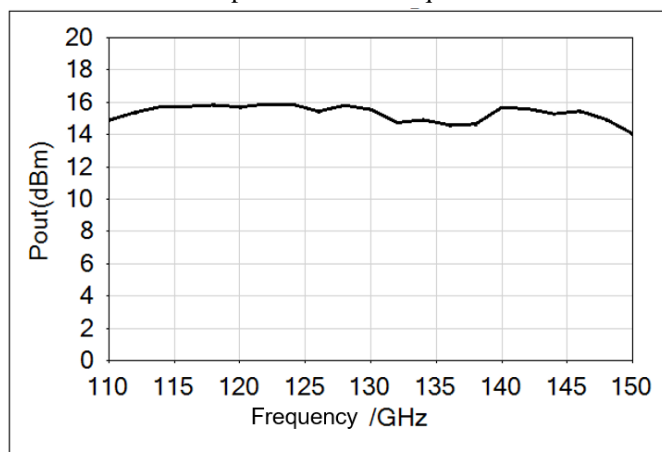
Parameter	Minimum	Typical	Maximum
Frequency Range	110GHz		150GHz
Small Signal Gain		18dB	
Saturated Output Power		15dBm	
Input Power		5dBm	10dBm
Input VSWR		2.5	
Output VSWR		2.5	
Drain Positive Voltage		+7V	+20 V
Saturation current		250 mA	
Specification Temperature	5 °C	+25 °C	35 °C
Operating Temperature	-55 °C		+85 °C

Mechanical Specs:

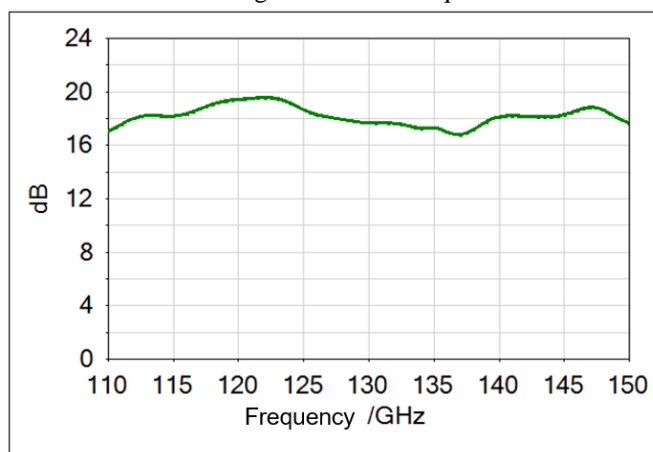
Item	Specification
Input	WR06 waveguide, UG-387/UM
Output	WR06 waveguide, UG-387/UM
Bias	Solder Pin
Size (W×L×H)	40mm×30mm×22mm

Measured Performance: ($V_d=7V$, $I_d=250mA$, $T_A=+25^{\circ}C$)

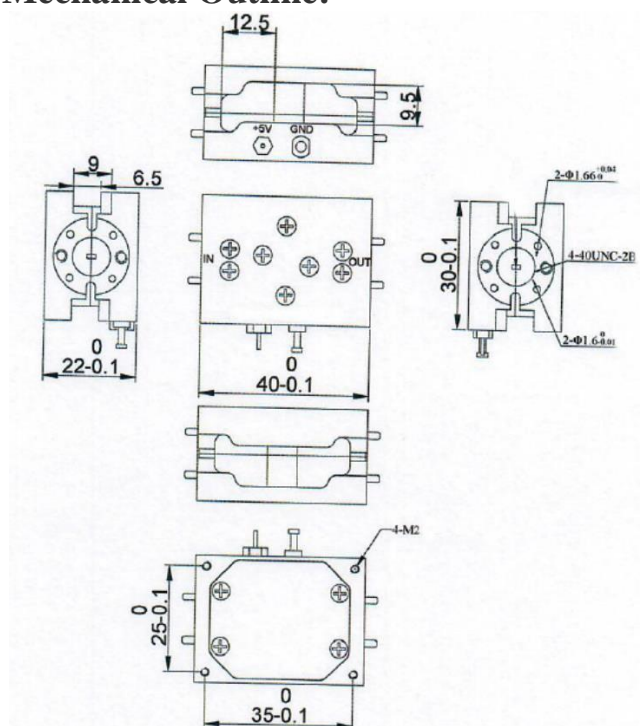
Saturated Output Power vs. Freq. @Pin=5dBm



Small Signal Gain vs. Freq.



Mechanical Outline:



Interface definition

Symbol	Function
IN	RF input
OUT	RF output
Vd	Power supply+7V
GND	Ground

Notes:

- 1) Electrostatic protection: Please strictly abide by the ESD protection requirements to avoid electrostatic damage;
- 2) When in use, the module should be grounded first, and then powered on;
- 3) It is necessary to ensure good heat dissipation during use;
- 4) The dimensions of the module can be customized according to user requirements;
- 5) Please contact terahub if you have any questions.

Notes:

1. Datasheet may be changed according to update of MMIC, Raw materials , process, and so on.
2. This data is the typical performance for the reference.